



 **RAYPATH**[®]
INTERNATIONAL

ECOLOGICAL CLEANING SYSTEM

For two decades we have been specializing in a cleaning branch offering excellent products on numerous European markets and in the United States. We operate in Network Marketing, which is a very convenient way of the purchase since it enables the Customer an easy access to our products and facilitates testing their cleaning properties. During the presentations our skilled Consultants demonstrate practical multi-function application of the cleaning wipes. They offer a professional guidance on the products or if you are interested in cooperation with our company, they can introduce you to the structure.

Our mission is to create the ecological awareness and to reduce the environmental pollution

*The philosophy of **RAYPATH** is based on 4 principles:*

Quality - we offer high-quality innovative and extremely effective products that are attested and certified.

Health - our products contribute to the protection of what people value the most - health

Comfort and Convenience - using our products gives you substantial savings as well as guarantees spending less time and energy.

Nature - our products are eco-friendly both during the production process as well as during their use. They substantially contribute to the protection of the ecosystem.



RAYPATH	
- Ecological Cleaning System	1
Features and Composition	4
Use	8
White Material – Wet Cleaning	9
Maintenance Material and White Novel Material – Damp Cleaning	11
Pink Material – Dry Cleaning	13
Sunbeam Cloth – Polishing	15
RAYPATH Ecobodycare	
- Ecological Body and Face Cleaning	17
Assembly	19
Cleaning System Sets	20
Nanotechnology in RAYPATH Wipes	21



Caring for the household means a clean and fragrant home, where family members feel comfortably. For achieving a perfect cleanness and preventing the spread of smell, dirt, viruses, bacteria and other microorganisms, it is necessary to use a great amount of chemical products.

These products are mostly made on the basis of solvents, acids and strong chemicals with addition of strong perfume components for covering their odour.

As their priority task is to kill all living microorganisms, they also have a negative impact on human organism. Chemical products therefore help you on one hand fighting dirt; on the other hand, they seriously damage your health and the environment.

RAYPATH offers ecological cleaning products designed for a thorough cleaning of the household using pure water without the need of chemical agents.



HEALTH PROTECTION - Chemical cleaning products with the priority task of protecting your health by removing dirt, dust and germs from the environment where you live, harm you more than the impurity itself. **RAYPATH** works by using pure water only, therefore cleaning with us does not cause any side effects to your health.



SAVING MONEY - You will substantially reduce your expenses on keeping cleanliness. A one-time investment into the cleaning unit is for long-time; their lifespan is at least several years long during which they do not lose their cleaning properties. It is worth mentioning that cold water may be used as well, as its temperature has no impact on products' efficiency.



CONVENIENCE, TIME AND ENERGY SAVING - Using **RAYPATH**, you clean 50 to 70% faster and easier compared with the traditional method. Moreover, the cleaned surface gets dirty substantially slower, so cleaning is more efficient and less frequent. You can dedicate your extra time and energy to other activities.

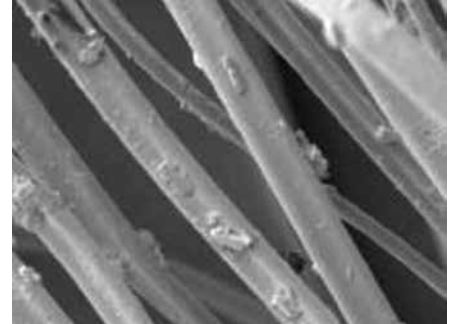
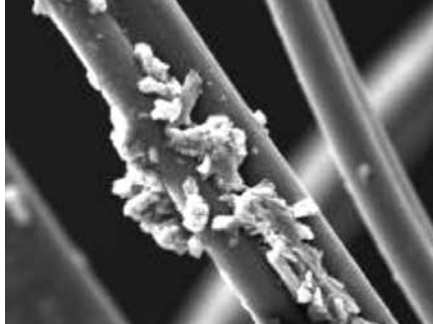


ENVIRONMENT PROTECTION - The biggest environment polluter are paradoxically not big plants and industry as such, but the households and everyday life of individuals. **RAYPATH** is a unique way how to eliminate the daily draining of lots of chemicals used for cleaning our households into the streams, rivers, seas and oceans. When protecting our planet we protect ourselves mainly.

Micro Fibre and Nano Silver Technology

The exceptional cleaning effect of the **RAYPATH** system is due to its composition. The cleaning units are made of special micro fibres with a thickness of 20 micrometres and its structure is similar to the structure of a human hair. That means that its profile is made of a groove, in which

dirt comes into, concentrates inside and is not spread onto the cleaned material. The dirt from the groove is easily flushed during washing and the fibre remains clean. The fibre surface is slightly disrupted by the use, the fibre opens up, but it does not change its structure. That allows improving the ability to absorb dirt. The fibre can also absorb odours.



Nano Silver molecules incorporated into the fibres have strong antiseptic and bacteriostatic features. They can destroy hundreds of germs, bacteria, moulds and other microorganism types by affecting their DNA as demonstrated by the “self-cleaning effect” of the cleaning unit.

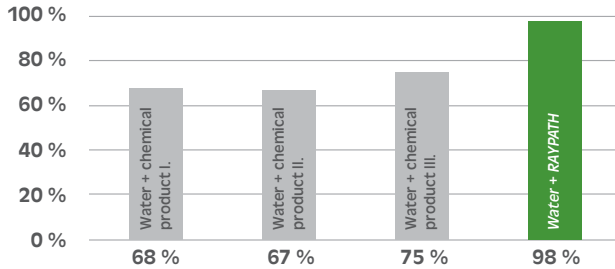
Specialized Studies

Chemical Products vs. RAYPATH

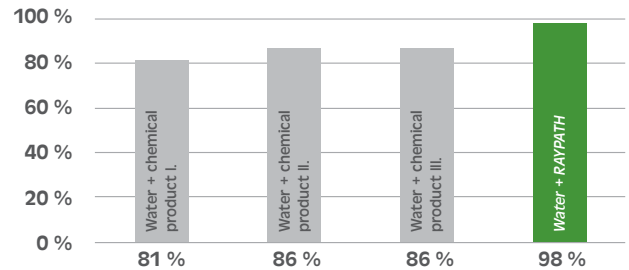
Laboratory tests were carried out at the Department of Industrial Commodity Science of the Cracow University of Economics and at Collegium Medicum of Jagiellonian University in Cracow aimed at proving the capability of the **RAYPATH** cleaning system to remove microorganisms like bacteria, yeasts and moulds from surfaces using a non-chemical cleaning. The tests have shown that the efficiency of the **RAYPATH** system is comparable to the tested chemical cleaning products and the results were even better in some cases. The products have an attestation by the National Institute of Public Health and National Institute of Hygiene.

The tests were carried out on two types of surfaces that are most common in households, hospitals, services and in the industrial sphere – synthetic and ceramic surface. The synthetic surface simulates a table board or the kitchen cupboard and the ceramic surface represents tiles, porcelain, glass, bathrooms tiles etc. Artificial dirt containing a mixture of dust, soot, coal dust, silicates and a layer of fat has been applied to the surfaces. The traditional method of cleaning consisted of using a cotton cloth dipped in a water solution with chemical products designed for cleaning the tested surfaces. Three the most common used chemical products from different producers were applied. The decrease of number of bacteria, yeasts and moulds was monitored after cleaning with chemical cleaning products and the **RAYPATH** cleaning units.

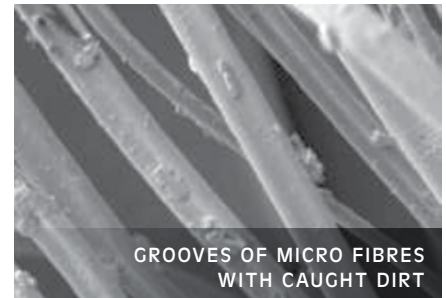
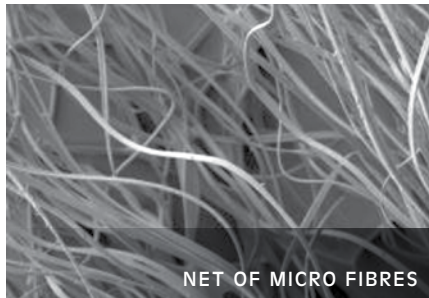
Test results on the synthetic surface



Test results on the ceramic surface

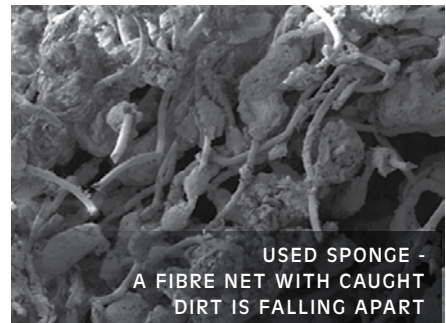
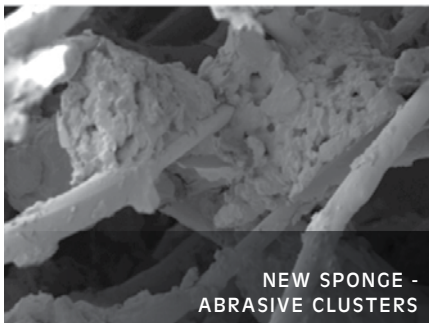


Common materials for cleaning vs. RAYPATH



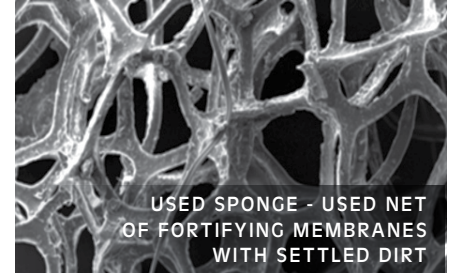
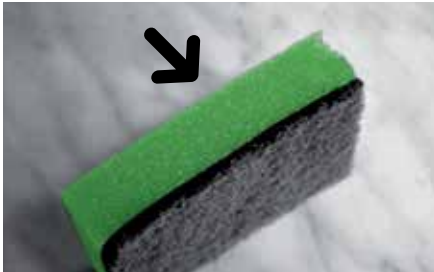
The micro fibre structure forming the cleaning unit is capable of absorbing dust, microorganisms, grease and other dirt into itself and not to spread them onto a clean surface. The fibre surface gets rough by using and its adsorption capacity therefore rises. When using traditional methods of cleaning based on detergents, the regular kitchen sponge seems to be the equivalent of RAYPATH cleaning wipe.

The net of fibres in the hard part of the sponge is very dense and rugged with incorporated abrasive material with the task to break up the dirt. The sponge can therefore hold the dirt in its dense structure, but it remains on the fibre surface and is further spread during cleaning. It is also difficult to remove the dirt from the fibres which allows the bacteria, moulds and other microorganisms to spread. The material gets sensitive, loses flexibility and falls apart after a while.



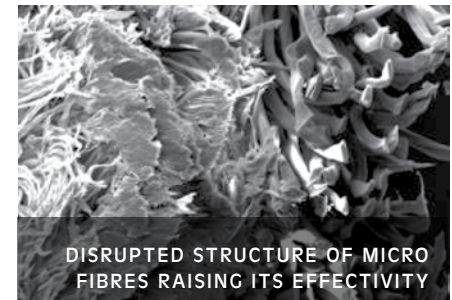
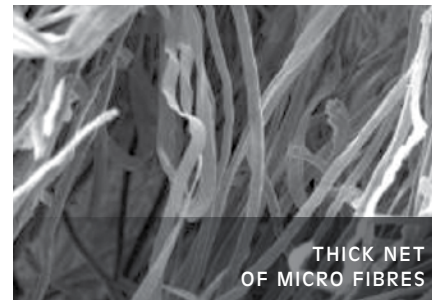
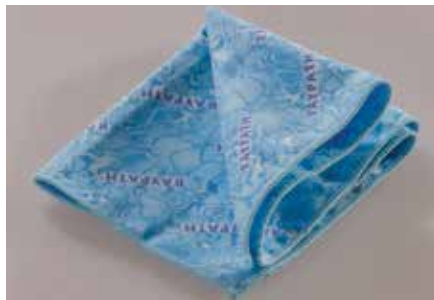
The porous part of the sponge consists of fortifying membranes which cause its flexibility. Already after a short use, the membranes tear and dirt is settling in the material

cavities. In combination with a damp environment, that the sponge usually has, it is an ideal place for a fast spread of bacteria, moulds and microorganisms



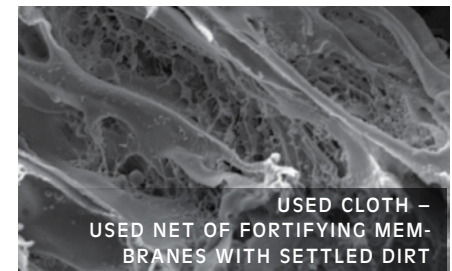
The Sunbeam cleaning cloth consists of micro fibres that are 10 micrometres thick each. A particularity of this cleaning unit is that the micro fibres are pressed into themselves with three layers, whereby the inner is the thinnest one,

and the side ones are thicker. That creates a material with a dense, but fine structure and with exceptional adsorption capacities – water and dirt comes into the inner part of the material through thick outer fibres, where it is enclosed and the surface remains clean.



A common replacement of the Sunbeam cleaning cloth that uses traditional methods of cleaning is the sponge cloth. It has a dense flexible porous structure that guarantees a high absorption capacity. Already after a short use

the material gets depreciated, pores are more sensitive and weaker and are a place where dirt is building up more and germs are spreading in the damp environment.



Use **RAYPATH** cleaning wipes with pure water only and prevent their contact with chemical agents. Water temperature has no influence on their efficiency.

Wash the wipes at least 3 times in an automatic washing machine on a short programme up to 60°C before using them. The pink units should be put into the third washing. Staple comes out of them, fibres open up in the water bath and they are ready to use. Wash the used cleaning units manually using the RAYPATH **NanoSilver** soap or in an automatic washing machine at a temperature up to 60°C using any kind of washing powder without adding softeners.

Do not let the used cleaning units dry out dirty, the fibre can get damaged. Dip them into clean water and wash them later. Dry the wipes freely, do not dry them in automatic drying machines or on heaters that damage the fibres.

When removing heavy dirt, like stains on textiles, marker or pen traces, tar, glue etc. use the **NanoSilver soap** together with clean water.

For removing calcium deposits from the bathroom, tiles and water taps, use lemon juice and let it work on the cleaned surface for a while. You can also clean jewellery, brass and rust with it.



White Material – Wet Cleaning

White material is characterised by the highest cleaning capability. It decomposes grease and dirt into emulsion that it absorbs and fixates. It has to be very wet when used, that means on surfaces that can easily put up with water – windows, mirrors, hard floorings, ceramic tiles, baths, sinks and other bathroom accessories, water taps, glass surfaces, kitchen cupboards, dishes, car bodyworks and wheel disks etc. It greatly absorbs dust and is ideal for cleaning fridges and microwave ovens where cleaning with chemical products is not recommended. You can also clean various stains on carpets, upholstery, clothing and shoes with it.

The **Express** cleaning unit serves for **cleaning windows**. Use a window cleaner to swipe water from the cleaned glass surfaces after cleaning and dry it with the **Sunbeam**

cloth after each swipe. You will also remove water and dirt remains from the window frames.

Use

Wet and wring out the cleaning wipes well before using them and remove the grease and dirt by circular movements. Remove water and dirt residues with a damp or dry **Sunbeam**. Rinse the cleaning units in clean water continuously during the cleaning. Wash them by hand with **NanoSilver soap** or in an automatic washing machine at a temperature up to 60°C with a washing powder without adding softeners after the use. Dry the cleaning units freely, do not dry them in automatic drying machines or on heaters.





Maintenance Material and White Novel Material – Damp Cleaning

Maintenance material and white Novel material work on a similar principle as the white one, but have a lesser density of fibres so they bind less water and it is possible to wring them out more thoroughly. They are used damp and are ideal for cleaning surfaces that could be damaged by excessive amounts of water. You can use it for cleaning all types of lounge suites (fabric, leather, imitation leather etc.) as well as all kinds of wooden furniture, wooden and floating floors, doors, wood blocks, cork, marble, musical instruments, painting frames, lights, electronic devices, jewellery, live and artificial flowers and car interiors.

Use

Wet and wring out the cleaning units well before using them and remove the grease and dirt by circular movements. Remove water and dirt residues with a damp or dry **Sunbeam cloth**. Wash them by hand with **NanoSilver soap** or in an automatic washing machine at a temperature up to 60°C with a washing powder without adding softeners after the use. Dry the cleaning units freely, do not dry them in automatic drying machines or on heaters.





Pink Material – Dry Cleaning

The pink material. The pink material is designed for removing dust from all surfaces. When using it, an antistatic charge occurs that draws dust into the cleaning unit and prevents its spread into the space. The antistatic charge occurs also on the cleaned surface that substantially slows the process of resettling of dust.

The material has also a polishing capability and you can use it to clean furniture, flowers, paintings, wood blocks and other flooring, blinds, electronic devices, car interior etc.

Use

Use the cleaning units dry only and swipe dust from the cleaned surface using soft movements. If needed, dust them off during cleaning.

Dust them off after cleaning and in case of a heavier dirt, wash them by hand with **NanoSilver soap** or in an automatic washing machine at a temperature up to 60°C with a washing powder without adding softeners after the use. Dry the cleaning wipes freely, do not dry them in automatic drying machines or on heaters.





Sunbeam Cloth – Polishing

Thanks to the dense structure of the fibres, the **Sunbeam** cloth has an exceptionally high absorption capacity. It absorbs water and emulsion residues resulting from using the white or maintenance material and it hence polishes the cleaned surface. You can polish various surfaces very simply and easily with it – glass, mirrors, lights, water taps, furniture, ceramics, dishes, housing accessories, car bodyworks, electronic appliances or fine optics.

You can use a dry or slightly damp **Sunbeam Optic** for cleaning glasses, cameras and camcorder lenses, computer monitors, cell phone displays, binoculars, CDs etc.

The **Sunbeam DUO** consists of two cleaning units in different colours which serves for better distinguishing – we recommend using one of the cleaning units in the kitchen and the second one for cleaning the bathroom and the rest of the household.

Due to its exceptional absorption capability and size, you can use the **Sunbeam XXL** as a towel for your body (when travelling, at the swimming pool, in the wellness centre etc.), as a towel for your hair, towel for small children or for people with sensitive

skin. You can also use it in the kitchen as a cloth for the dishes, for polishing all kinds of firm floors, for swiping and polishing car bodyworks or for drying the fur of your pets.

Use

Use the cleaning cloth dry or damp, swipe water residues that remain on the cleaned surface after using the white or maintenance material on them. You can also polish surfaces that are not very dirty with them and it is therefore not possible to clean them with a white or maintenance material.

Used cleaning wipes wash them by hand with **NanoSilver soap** or in automatic washing machine at a temperature up to 60°C with a washing powder without adding softeners after the use. Dry the cleaning units freely, do not dry them in automatic drying machines or on heaters.





Every woman wants to have a healthy and beautiful skin. The modern market offers us a vast range of preparations that attract us by the promise of immediate and stunning effects. Cosmetics, although necessary and invaluable for us, however contain chemicals that may have negative effects on the skin, and even harm our health. Especially make-up removing preparations and peeling agents include solvents and other toxic substances that cause irritation to skin, eyes and may cause chronic allergies. With our body care gloves, we do not burden our skin with unnecessary, even harmful substances, because they are used only with pure water.

Beautiful, healthy, supple and pleasant to the touch skin is the result of due care. We can say that the care is appropriate only when the skin is optimally moisturized, well nourished and effectively protected. To ensure this daily skin care we created a unique combination of naturalness and modern technology. Experts offer an excellent care products for daily use, their regular use provides the skin healthy and beautiful appearance.

Face Glove - wipe for the make-up removal

Face Glove effectively removes make-up (even waterproof), bacteria and other skin impurities using only pure water. It does not irritate sensitive skin, provides a perfect care for oily complexion, from which the glove removes the excess of sebum. It also acts as a gentle scrub which stimulates the skin to create collagen and elastin fibers. Not irritating to eyes, thus can be used by contact lens wearers.

Use

Immerse the glove in water and wring it out slightly. After use, rinse it in water with natural **Nanosilver soap**. If required, wash it in a washing machine up to 40°C. Do not use any softeners. Dry in a cool and aired place.

Face Cleaner and Body Cleaner

Face Cleaner - glove for face and cleavage peeling

The glove thoroughly removes a layer of dead skin cells from the surface of the skin, cleansing, refreshing and smoothing it out, as well as stimulating intensive renewal. This procedure also prevents discolouration of the skin, unblocks the pores, and as a result active substances contained in the applied cosmetic are easily absorbed. Massage improves blood circulation and stimulates the skin to produce collagen. As a result it becomes elastic and firm.

Body Cleaner - glove for body care

The glove thoroughly removes a layer of dead skin cells from the surface of the skin, as well as impurities and excess oil, which helps with its regeneration. Using this glove will prepare your skin to accept the active ingredients of the applied cosmetic. Massage removes callous epidermis, strongly improves blood circulation, smoothens and adds elasticity to the skin. Regular use soothes stretch marks and reduces cellulite as well as prevents discolouration of the skin.

Use

Wet the glove and massage your face and cleavage or the whole body with it softly, in small, circular movements. Dry your skin and then use moisturizer. Adapt frequency of procedures according to skin sensitivity, not more than 2-3 times per week. During the initial phase of the treatment you may notice a slight redness of the skin. After use rinse out the Face Cleaner and Body Cleaner in water with **Nanosilver soap**. Machine washable up to a temperature of 60°C, without the use of water softening agents.



FACE CLEANER

FACE GLOVE

BODY CLEANER

MADE IN

FLOOR SET

The floor set consists of a quick fit head and a telescopic pole. A blocking clamp and hold with a press clip, where you can attach the telescopic pole is on the quick fit head.

- grasp the press clip on the sides and pull it out of the hold
- insert the telescopic pole in such a manner that the holes on the pole overlap with the holes on the hold
- place the press clip into the holes, the clip will fall into its place after a slight rotation of the hold
- tighten the thread on the hold
- set the length through the thread on the telescopic pole
- release the arm of the quick fit head by pressing the blocking clamp
- put the floor pad and straighten the arm of the quick fit head that fixes the blocking clamp
- the floor set is ready to use
- if you need to change the angle of the quick fit head insert the joint for the express

EXPRES FOR HIGH WINDOWS

For cleaning high windows, use the set made up of express, cone, joint for the express and the telescopic pole.

- press the spring on the sides of the joint and insert it into the holes of the telescopic pole
- press the spring on the cone and insert it into the holes of the joint (on the other side as on the telescopic pole)
- put the express for windows on the cone
- set the length of it with the thread on the telescopic pole
- you can change the angle of the express with the joint according to your needs. Fasten the screw on the joint tightly before the first use.



House Cleaning Set

A complete set of products enabling a comprehensive cleaning of all soiled surfaces (all types of floors, tiles, walls, wallpaper, windows, mirrors etc.), kitchen and bathroom equipment (sink, washbasin, bathtub, fittings, household appliances), the following equipment: TV and computer, various household and office equipments. Contrary to traditional methods of cleaning which use detergents, Raypath offers a NanoSilver Cleaning Technique which altogether with cleaning wipes uses only pure water. Faster, more efficient money-saving housekeeping are not the only benefits of using our cleaning set; it is vital that we do not use chemical agents. This is not only the weapon in the fight against various allergies but the generous act for the protection of eco-system as well.

Car Cleaning Set

Eco-friendly Car Cleaning Set is a high quality kit which cleans even stubborn dirt WITHOUT DETERGENTS. This small kit enables comprehensive, easy and efficient washing of a whole car.

The wipes easily reach the most inaccessible places inside the car and effectively remove grease and dirt outside it, even from very heavily soiled areas. Cleaning the windows and mirrors means that their surfaces are totally free of grease, with no annoying smudges. Precise performance on each stage of washing delays the re-position of dirt and dust.

The wipes are manufactured from selected microfibers of the appropriate hardness, therefore they do not scratch the delicate varnished surface; the accurate structure and composition of the fibres enable effective car cleaning without the use of soaps, shampoos and other auto cosmetics that are not environmentally friendly.



NANOTECHNOLOGY IN RAYPATH WIPES

In the face of growing and constantly various threats from the world of pathogenic microorganisms and fungi, the Raypath company offers a wide range of exclusive wipes enriched in nanotechnology process. This technique generates the structures or elements having sizes starting from 1 to 100 nanometres (nanometre = 1 millionth of a millimeter).

In the circumstances, when by the recently discovered gene NDM 1 which spreads easily from one type of bacteria to another and causes their resistance to almost all antibiotics at the same time, biocidal efficacy of nanosilver is invaluable. The use of wipes enriched with nanosilver particles results in effective destruction of hundreds of types of pathogenic bacteria and viruses, wholly increasing the effectiveness of immunological barrier of human body. Nanosilver interacts with DNA of micro-organisms; disrupts the structure of physiological capabilities, leading to their extermination. What's more, the silver particles cover the cell membrane of microbes by blocking the enzymes essential for their reproduction.

Unusual efficiency of microbiological cleaning (ca. 100%) and lack of side effects after using (eg. allergies) are the vital advantages of our cleaning wipes. By destroying even hundreds of types of micro-organisms and inhibiting the expansion of moulds and fungi, Raypath wipes provide almost a hundred-percent antiseptic properties.

Dermatological testes have proven, that the use of the wipes enriched with nanosilver is in accordance with safety requirements for health (acc. with the act of Cosmetics, Journal of Laws of 2001, No.42, item 473, art.11 section 1 point 4)

Bacteriostatic properties of wipes used in NanoSilver Technology

Studies conducted in several research centers (Jagiellonian University - Department of Microbiology at Collegium Medicum in Cracow, POCh in Gliwice, JARS Microbiology Laboratory of the German accreditation DACH) undoubtedly indicate a great efficiency of pathogen extermination through using Raypath Technology of Cleaning – NanoSilver Technology.

The research methods were carried out in accordance with the standards: AATC 100-2014 and PN-ISO 18593:2005. They are accepted by the Office of Registration of Medical Products, Medical Devices and Biocidal Products.

Metallic silver particles that are used for the enrichment are fragmented on the atomic level - below 10 nanometers (for comparison: the dimensions of the viruses 15-300 nanometers, whereas the typical bacterium cell has the diameter of ca. 1000 nanometers). Such a high fragmentation (per 1 cm of Raypath wipes there is an unimaginable amount of hundreds of billions of silver particles!) causes a colossal growth of nanosilver active surface, which reaches the quantity at least from several dozen m² in a single Raypath's wipe.



RAYPATH[®]
INTERNATIONAL



WWW.RAYPATH.COM